

# HALFEN HSD SHEAR DOWEL SYSTEM

## Technical Product Information



Acc. to EN 1992-1-1:2008



# **We are one team.** **We are Leviat.**

Leviat is the new name of CRH's construction accessories companies worldwide.

Under the Leviat brand, we are uniting the expertise, skills and resources of HALFEN and its sister companies to create a world leader in fixing, connecting and anchoring technology.

The products you know and trust, including the HALFEN HSD Shear dowel system, will remain an integral part of Leviat's comprehensive brand and product portfolio. As Leviat, we can offer you an extended range of specialist products and services, greater technical expertise, a larger and more agile supply chain and better, faster innovation.

By bringing together CRH's construction accessories family as one global organisation, we are better equipped to meet the needs of our customers, and the demands of construction projects, of any scale, anywhere in the world.

**This is an exciting change. Join us on our journey.**

**Read more about Leviat at [Leviat.com](https://www.leviat.com)**



Our product brands include:

**Ancon**<sup>®</sup>

  
**HALFEN**

**PLAKA**



**60**  
locations

sales in  
**30+**  
countries

**3000**  
people worldwide

Imagine. Model. Make.

[Leviat.com](https://Leviat.com)

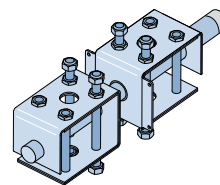
# HALFEN HSD SHEAR DOWEL SYSTEM

## Table of contents



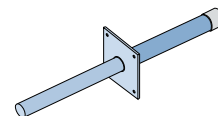
### HALFEN HSD-CRET heavy duty shear dowels

-	Introduction:	
	- Basics – Expansion joints to prevent constraint stresses	3 - 4
-	Product features:	
	- Technical data	5
	- Type selection, dimensions	6
-	Relevant dimensioning resistances:	
	- HSD-CRET Shear dowels with longitudinal movement	7
	- HSD-CRET V Shear dowels with longitudinal and transverse movement	8
-	In situ reinforcement:	
	- Stirrup arrangement	9 - 10
	- Design example slab	11 - 12
	- Design example beam	13 - 14
-	Fire protection	
	- HSD-F Fire protection pad	15
-	Assembling references	16



### HALFEN HSD single shear dowels

-	Product features	17
-	Dimensioning	18 - 20
-	Assembling references	21



### HALFEN HSD shear dowel system

-	Submission and software	22
-	Addresses HALFEN worldwide	23



# HALFEN HSD SHEAR DOWEL SYSTEM

## Introduction

### Expansion joints to prevent constraint stresses

The effects of

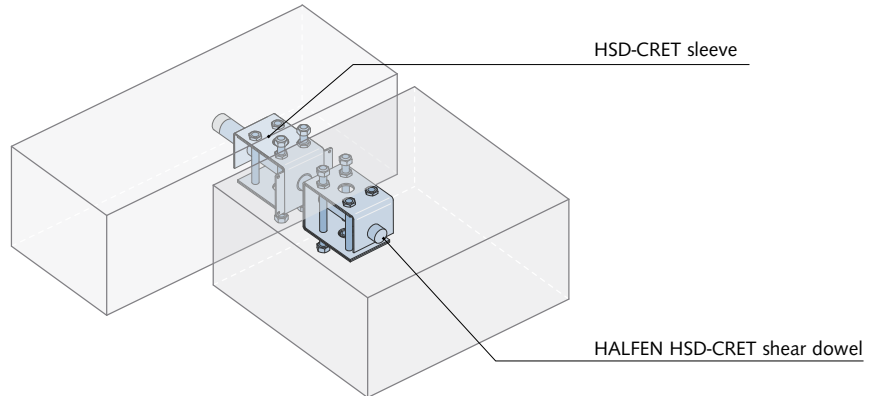
- shrinkage
- temperature
- creep in case of post-tensioning
- subsidence

require constructive measures in large supporting frameworks.

**Movement joints** prevent the uncontrolled formation of cracks and the subsequent damage that arises from this as a result of leakage and corrosion.

### Advantages of the HALFEN shear dowel system:

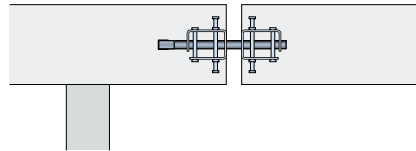
- simple geometry of the formation of the joint
- simple formwork and time saving installation
- simple reinforcement layout
- gain in space through avoidance of double supports
- cost saving and gain in space through staged erection of the construction elements
- approved in several European countries
- user-friendly HSD dimensioning software available in the Internet [www.halfen.com](http://www.halfen.com) (→ country code)
- fire resistance classification F120 designable with fire protection pads (see page 15)



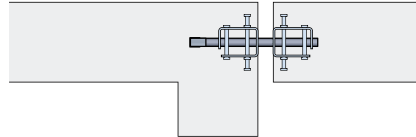
### The solution:

#### the HALFEN HSD Shear dowel system

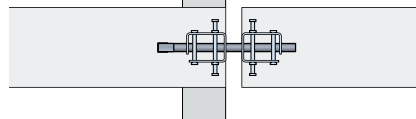
Flat slab (vertical section)



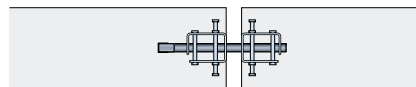
Slab connection with console (vertical section)



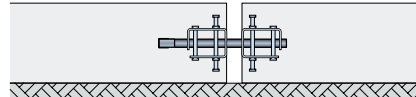
Double column replaced by a single column (vertical section)



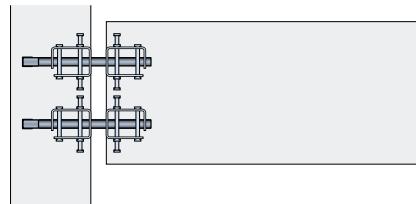
Connection of a supporting wall (horizontal section)



Expansion joint in floor slab (vertical section)

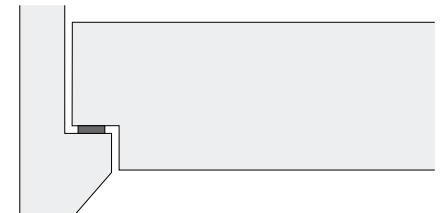
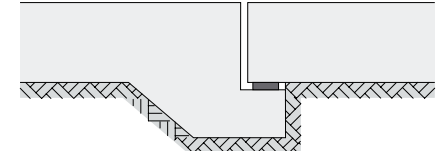
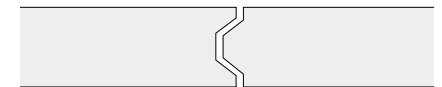
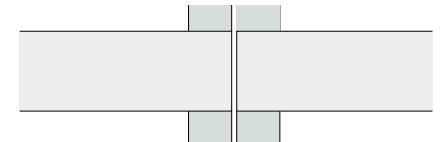
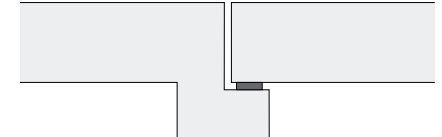
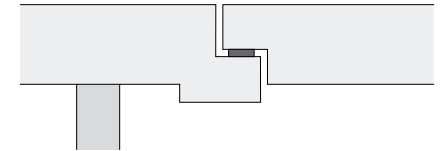


Connection between beam / support (vertical section)



### Conventional:

#### problems with conventional design



# HALFEN HSD SHEAR DOWEL SYSTEM

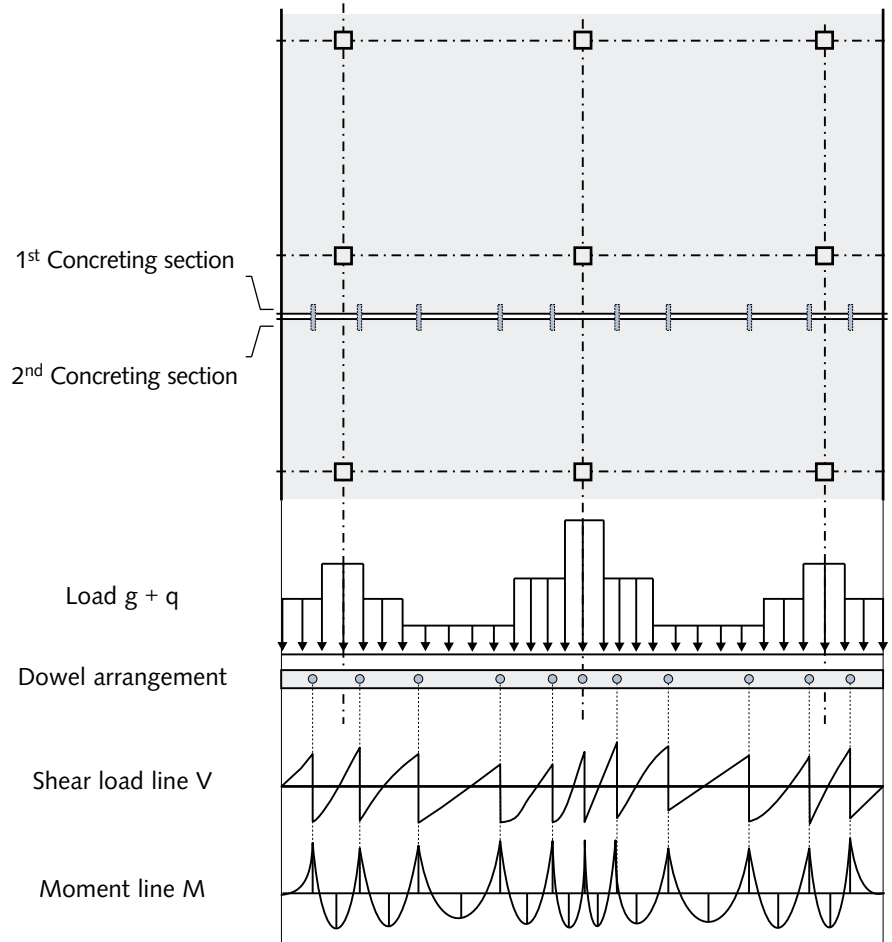
## Dimensioning

### Expansion joints to prevent constraint stresses

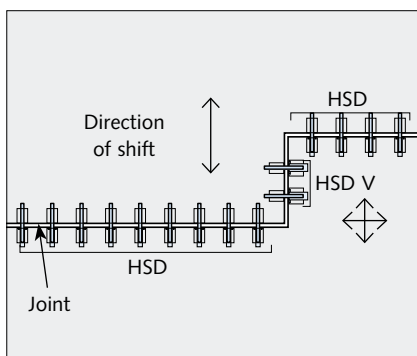
For flat slabs, it is advisable to arrange the dowels at different spacings according to the different shear load concentrations. The value and the distribution of the shear load to be transmitted can be determined by a finite elements slab calculation. The static model of a continuous beam is suitable for the dimensioning of the edge of the slab. Shear and bending moments will be used for the dimensioning of the reinforcement across and along the edge. It must thereby be noted that transverse and longitudinal reinforcement is also required in the load introduction area of the dowel, which could be decisive against those from the continuous beam calculation. With large dowel spacings, the continuous beam calculation is normally the decisive value for the longitudinal reinforcement.

#### Dimensioning of the joint width

$f$  = calculated joint width + safety supplement (approx. 1cm)



### Arrangement of the shear dowel - Examples

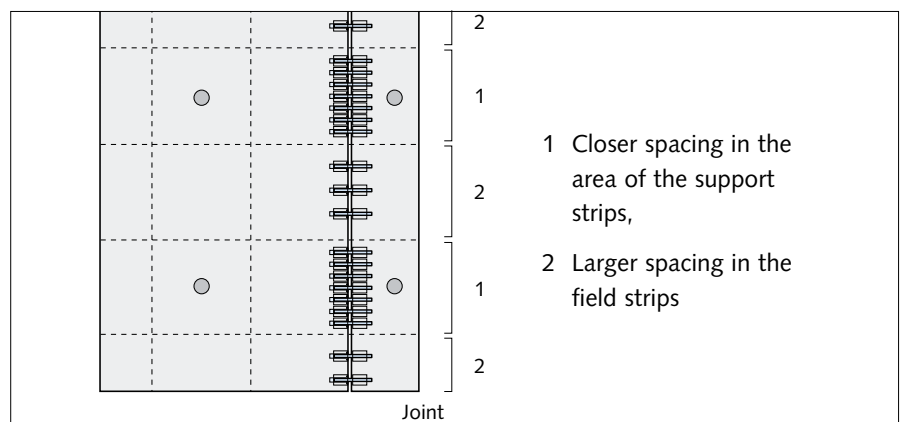


#### Angled joint run

Shifting direction of the shear dowels:

HSD = longitudinal movement

HSD V = longitudinal and transverse movement



Flat slab joint; dowel arrangement corresponding to the support model for the slab

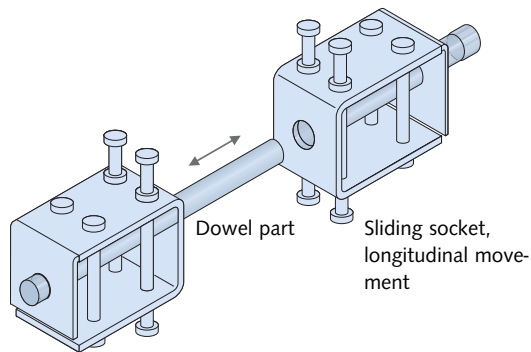
# HALFEN HSD SHEAR DOWEL SYSTEM

## Heavy-duty shear dowels

### Product description

#### HSD-CRET heavy-duty shear dowel

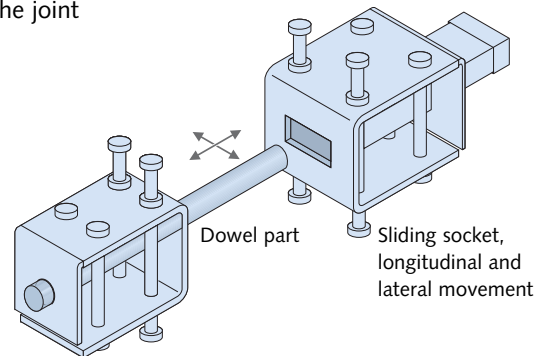
consisting of dowel part and sliding socket,  
single-axis movement - along the dowel axis



HALFEN HSD-CRET heavy-duty shear dowels allow a sliding movement in the direction of the dowel axis. The dowels are normally used to transfer shear loads in any direction. A high load capacity is effectuated by the load distribution body.

#### HSD-CRET V heavy-duty shear dowel

consisting of dowel part and sliding socket,  
two-axis movement - along the dowel axis and parallel to the joint



If lateral movements must be considered, the HALFEN HSD-CRET V heavy-duty shear dowel is used, which allows also lateral movement. In this case, the shear load will only be transferred in one direction.

### Technical data

#### Dowel diameter and minimum component thickness

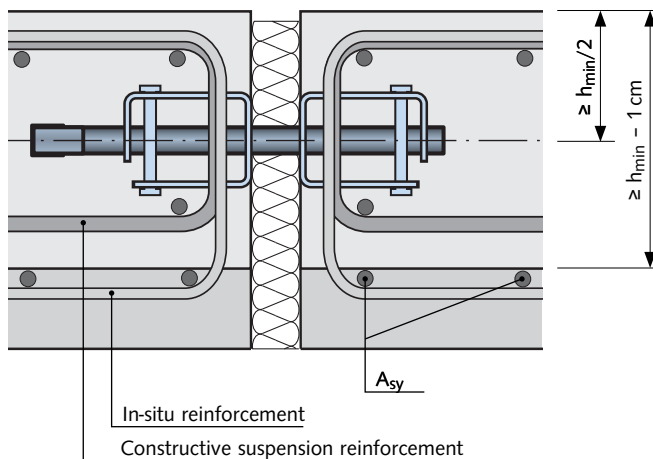
HSD-	HSD-	Dowel diameter [mm]	Minimum component thickness $h_{min}$ [cm]
CRET 122	CRET 122 V	22	18
CRET 124	CRET 124 V	24	20
CRET 128	CRET 128 V	28	24
CRET 134	CRET 134 V	34	30
CRET 140	CRET 140 V	40	35
CRET 145	CRET 145 V	45 · 45 <sup>1)</sup>	42
CRET 150	CRET 150 V	50 · 50 <sup>1)</sup>	60
CRET 155	CRET 155 V	55 · 55 <sup>1)</sup>	65

<sup>1)</sup> Square shaped cross section

#### Materials:

- dowels HSD CRET 122-140: stainless steel S 690 (grade 1.4462)
- dowels HSD CRET 145-155: (grade 1.7225)
- load distribution body and sliding socket: Stainless steel S 275 (grade 1.4404)
- fixing rod: Stainless steel, strength class 70 (grade 1.4401)
- All materials correspond to at least the corrosion-resistance class III.

### Installation in semi-prefabricated slabs



#### Recommendation:

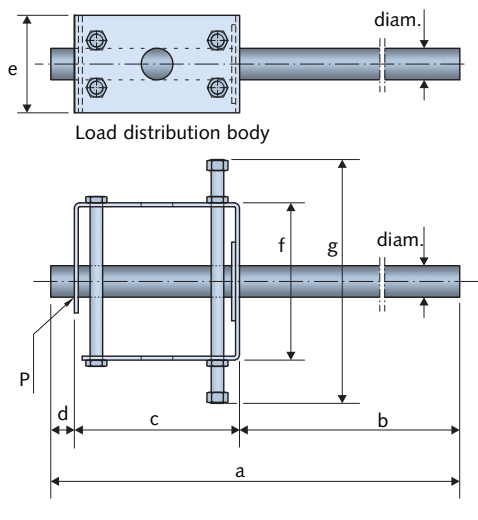
- Insertion of constructive suspension reinforcement in the semi-prefabricated slab (dimensioning for  $V_{Rd}/3$ ).
- Thickness of the in-situ cast concrete =  $h_{min} - 1 \text{ cm}$ .
- Dimension between the shear dowel axis and upper edge of the in-situ concrete =  $h_{min}/2$ .
- With a sufficient thickness of the in-situ concrete, the reinforcement  $A_{sy}$  can also be placed outside the semi-prefabricated slab.
- In-situ reinforcement ( $A_{sx}$  and  $A_{sy}$  top) is to be arranged according to the tables on pages 9 to 10 and/or the approval.

# HALFEN HSD SHEAR DOWEL SYSTEM

## Heavy-duty shear dowels

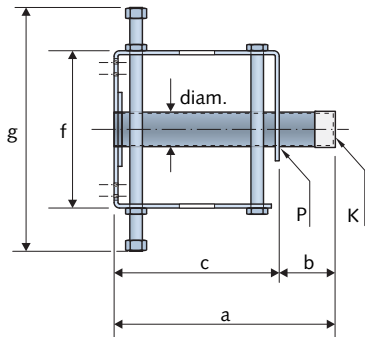
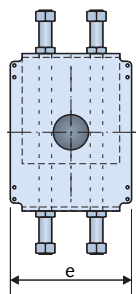
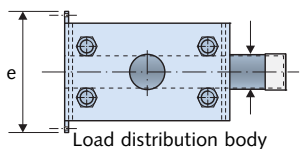
### Type selection

#### Dowel part



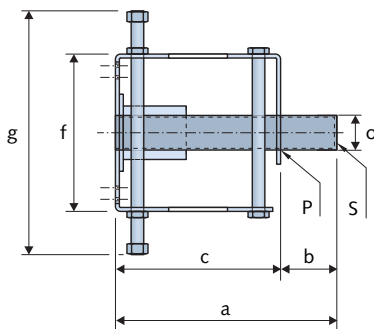
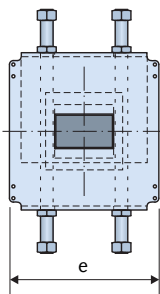
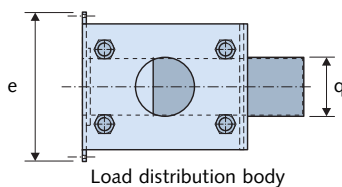
#### Sliding socket

- Sliding in longitudinal direction



#### Sliding socket V

- Sliding in longitudinal and transverse direction



		Dimensions [mm]									
HSD-CRET type		a	b	c	d	e	f	g	diam.	o	q
122 / 122 V	dowel part	302	180	108	14	70	80	140	22	-	-
	socket	180	72	108	-	100	80	140	25.4	-	-
	socket V	181.5	73.5	108	-	125	80	140	-	26	50
124 / 124 V	dowel part	341	192	133	16	76	90	160	24	-	-
	socket	192	59	133	-	106	90	160	28	-	-
	socket V	193.5	60.5	133	-	133	90	160	-	28	55
128 / 128 V	dowel part	388	215	155	18	88	110	200	28	-	-
	socket	215	60	155	-	118	110	200	32	-	-
	socket V	217	62	155	-	146	110	200	-	32	60
134 / 134 V	dowel part	450	246	180	24	106	160	260	34	-	-
	socket	246	66	180	-	136	160	260	38	-	-
	socket V	248	68	180	-	168	160	260	-	38	78
140 / 140 V	dowel part	520	280	210	30	124	200	310	40	-	-
	socket	280	70	210	-	154	200	310	44	-	-
	socket V	281.5	71.5	210	-	190	200	310	-	44	75
145 / 145 V	dowel part	546	302	210	34	124	250	380	45 <sup>1)</sup>	-	-
	socket	309	99	210	-	154	250	380	-	-	-
	socket V	309	99	210	-	194	250	380	-	49	90
150 / 150 V	dowel part	609	335	210	64	160	300	560	50 <sup>1)</sup>	-	-
	socket	337	127	210	-	190	300	560	-	-	-
	socket V	337	127	210	-	230	300	560	-	54	95
155 / 155 V	dowel part	667	363	230	74	200	350	610	55 <sup>1)</sup>	-	-
	socket	365	135	230	-	230	350	610	-	-	-
	socket V	365	135	230	-	270	350	610	-	59	100

Dowels 145/145 V, 150/150 V and 155/155 V have square shaped cross sections

<sup>1)</sup> edge length of cross section

#### Ordering example:

HALFEN heavy-duty shear dowel **HSD-CRET 124 V**  
 Load range \_\_\_\_\_  
 V = Transverse and longitudinal movement

P = Spot welding  
 K = PE pipe protection cap  
 S = Sheet metal cover



# HALFEN HSD SHEAR DOWEL SYSTEM

## Heavy-duty shear dowels

### Dimensioning

#### Ultimate limit state:

$$V_{Rd} = \min(V_{Rd,1}; V_{Rd,2}; V_{Rd,max}) \leq V_{Rd,s}$$

$V_{Rd,s}$  Load capacity of the additional slab border reinforcement

$V_{Rd,1}$  Design resistance of the steel dowel

$$V_{Ed} \leq V_{Rd} \quad (\text{with consideration of friction factor } f_{\mu})$$

$V_{Rd,2}$  Design resistance of the steel box

If a dowel will be selected from these tables, no further proofs are required.

$V_{Rd,max}$  Load capacity of the concrete compression struts

The values quoted for the maximum dimensioning resistance  $V_{Rd}$  only apply for an arrangement of the suspension reinforcement according to the table on page 9.

#### Dimensioning of the joint width $f$

$f$  = calculated joint width + safety supplement (approx. 1cm)

$V_{Ed}$  = design load on the shear dowel with partial safety factors acc. EN 1992-1-1:2008.

$f_{\mu}$  = Friction factor (1.0 for dowels with longitudinal movement)  
(0.9 for dowels with longitudinal and transverse movement)

Relevant dimensioning resistances  $V_{Rd}$  [kN] HSD-CRET Shear dowels with longitudinal movement

Shear dowel	Component thickness [mm]	C20/25						C25/30					
		Joint width $f$ [mm]						Joint width $f$ [mm]					
		≤ 10	20	30	40	50	60	≤ 10	20	30	40	50	60
HSD-CRET-122	180	54.9	54.9	54.9	54.9	53.2	44.4	68.6	68.6	68.6	66.6	53.2	44.4
	200	61.3	61.3	61.3	61.3	53.2	44.4	76.6	76.6	76.6	66.6	53.2	44.4
	220	67.6	67.6	67.6	66.6	53.2	44.4	84.5	84.5	81.8	66.6	53.2	44.4
	240	74.0	74.0	74.0	66.6	53.2	44.4	92.5	92.5	81.8	66.6	53.2	44.4
	250	77.2	77.2	77.2	66.6	53.2	44.4	96.5	96.5	81.8	66.6	53.2	44.4
	260	80.4	80.4	80.4	66.6	53.2	44.4	100.5	98.2	81.8	66.6	53.2	44.4
	≥280	86.8	86.8	81.8	66.6	53.2	44.4	108.5	98.2	81.8	66.6	53.2	44.4
HSD-CRET-124	200	79.8	79.8	79.8	79.8	69.1	57.6	99.7	99.7	99.7	86.4	69.1	57.6
	220	87.7	87.7	87.7	86.4	69.1	57.6	109.7	109.7	108.8	86.4	69.1	57.6
	240	95.7	95.7	95.7	86.4	69.1	57.6	119.6	119.6	108.8	86.4	69.1	57.6
	250	99.7	99.7	99.7	86.4	69.1	57.6	124.6	124.6	108.8	86.4	69.1	57.6
	260	103.7	103.7	103.7	86.4	69.1	57.6	129.6	125.6	108.8	86.4	69.1	57.6
	≥280	111.7	111.7	108.8	86.4	69.1	57.6	139.6	125.6	108.8	86.4	69.1	57.6
HSD-CRET-128	240	121.0	121.0	121.0	121.0	109.8	91.5	151.2	151.2	147.9	130.2	109.8	91.5
	250	125.6	125.6	125.6	125.6	109.8	91.5	157.0	157.0	147.9	130.2	109.8	91.5
	260	130.3	130.3	130.3	130.2	109.8	91.5	162.8	162.8	147.9	130.2	109.8	91.5
	280	139.6	139.6	139.6	130.2	109.8	91.5	174.5	169.1	147.9	130.2	109.8	91.5
	300	148.9	148.9	147.5	130.2	109.8	91.5	186.1	169.1	147.9	130.2	109.8	91.5
	≥320	158.2	158.2	147.5	130.2	109.8	91.5	188.2	169.1	147.9	130.2	109.8	91.5
HSD-CRET-134	300	202.9	202.9	202.9	197.0	175.5	162.7	253.6	239.7	219.3	198.2	175.7	162.7
	≥320	213.8	213.8	213.8	197.0	175.5	162.7	259.5	239.7	219.3	198.2	175.7	162.7
HSD-CRET-140	350	290.4	290.4	290.4	290.4	263.0	250.2	363.0	347.0	320.8	293.2	263.1	250.2
	360	296.8	296.8	296.8	291.9	263.0	250.2	370.9	347.0	320.8	293.2	263.1	250.2
	380	309.4	309.4	309.4	291.9	263.0	250.2	372.1	347.0	320.8	293.2	263.1	250.2
	≥400	322.0	322.0	317.9	291.9	263.0	250.2	372.1	347.0	320.8	293.2	263.1	250.2

For concrete classes C30/37 and higher the values for C25/30 have to be used.

$V_{Rd,1}$

$V_{Rd,2}$

$V_{Rd,max}$

With partial safety factors:  $\gamma_s = 1.15$  EN 1992-1-1:2008;  $\gamma_c = 1.5$  EN 1992-1-1:2008;  $\gamma_{M0} = 1.0$  EN 1993-1-1;  $\gamma_{M2} = 1.25$  EN 1993-1-8

Dimensioning resistances for HSD-CRET 145, HSD-CRET 150 and HSD-CRET 155 available on request. Addresses → page 23

# HALFEN HSD SHEAR DOWEL SYSTEM

## Heavy-duty shear dowels

### Dimensioning

$$V_{Rd} = \min(V_{Rd,1}; V_{Rd,2}; V_{Rd,max}) \leq V_{Rd,s}$$

$V_{Rd,1}$  Design resistance of the steel dowel

$V_{Rd,2}$  Design resistance of the steel box

$V_{Rd,max}$  load capacity of the concrete compression struts

$V_{Rd,s}$  Load capacity of the additional slab border reinforcement

$$V_{Ed} \leq V_{Rd} \text{ (with consideration of friction factor } f_{\mu}\text{)}$$

If a dowel will be selected from these tables, no further proofs are required.

The values quoted for the maximum dimensioning resistance  $V_{Rd}$  only apply for an arrangement of the suspension reinforcement according to the table on page 9.

### Dimensioning of the joint width $f$

$f$  = calculated joint width + safety supplement (approx. 1cm)

$V_{Ed}$  = design load on the shear dowel with partial safety factors acc. EN 1992-1-1:2008.

$f_{\mu}$  = Friction factor (1.0 for dowels with longitudinal movement)  
(0.9 for dowels with longitudinal and transverse movement)

Relevant dimensioning resistances  $V_{Rd}$  [kN] HSD-CRET V shear dowels with longitudinal and transverse movement

Shear dowel	Component thickness [mm]	C20/25						C25/30					
		Joint width $f$ [mm]						Joint width $f$ [mm]					
		≤ 10	20	30	40	50	60	≤ 10	20	30	40	50	60
HSD-CRET-122 V	180	54.9	54.9	54.9	54.9	47.9	39.9	68.6	68.6	68.6	59.9	47.9	39.9
	200	61.3	61.3	61.3	59.9	47.9	39.9	76.6	76.6	76.6	59.9	47.9	39.9
	220	67.6	67.6	67.6	59.9	47.9	39.9	84.5	84.5	79.4	59.9	47.9	39.9
	240	74.0	74.0	74.0	59.9	47.9	39.9	92.5	92.5	79.4	59.9	47.9	39.9
	250	77.2	77.2	77.2	59.9	47.9	39.9	96.5	93.1	79.4	59.9	47.9	39.9
	260	80.4	80.4	79.4	59.9	47.9	39.9	100.5	93.1	79.4	59.9	47.9	39.9
	≥280	86.8	86.8	79.4	59.9	47.9	39.9	108.5	93.1	79.4	59.9	47.9	39.9
HSD-CRET-124 V	200	79.8	79.8	79.8	77.8	62.2	51.8	99.7	99.7	99.7	77.8	62.2	51.8
	220	87.7	87.7	87.7	77.8	62.2	51.8	109.7	109.7	101.4	77.8	62.2	51.8
	240	95.7	95.7	95.7	77.8	62.2	51.8	119.6	119.6	101.4	77.8	62.2	51.8
	250	99.7	99.7	99.7	77.8	62.2	51.8	124.6	119.0	101.4	77.8	62.2	51.8
	260	103.7	103.7	101.4	77.8	62.2	51.8	129.6	119.0	101.4	77.8	62.2	51.8
	≥280	111.7	111.7	101.4	77.8	62.2	51.8	139.6	119.0	101.4	77.8	62.2	51.8
HSD-CRET-128 V	240	121.0	121.0	121.0	121.0	98.8	82.3	151.2	151.2	138.5	123.4	98.8	82.3
	250	125.6	125.6	125.6	123.4	98.8	82.3	157.0	157.0	138.5	123.4	98.8	82.3
	260	130.3	130.3	130.3	123.4	98.8	82.3	162.8	162.2	138.5	123.4	98.8	82.3
	280	139.6	139.6	138.4	123.4	98.8	82.3	174.5	162.2	138.5	123.4	98.8	82.3
	300	148.9	148.9	138.4	123.4	98.8	82.3	182.6	162.2	138.5	123.4	98.8	82.3
	≥320	158.2	158.2	138.4	123.4	98.8	82.3	182.6	162.2	138.5	123.4	98.8	82.3
HSD-CRET-134 V	300	202.9	202.9	202.9	185.6	162.7	147.4	251.8	231.1	209.5	186.5	162.7	147.4
	≥320	213.8	213.8	207.6	185.6	162.7	147.4	251.8	231.1	209.5	186.5	162.7	147.4
HSD-CRET-140 V	350	290.4	290.4	290.4	275.6	250.2	240.0	361.1	334.6	306.6	276.2	250.2	240.0
	360	296.8	296.8	296.8	275.6	250.2	240.0	361.1	334.6	306.6	276.2	250.2	240.0
	380	309.4	309.4	304.5	275.6	250.2	240.0	361.1	334.6	306.6	276.2	250.2	240.0
	≥400	322.0	322.0	304.5	275.6	250.2	240.0	361.1	334.6	306.6	276.2	250.2	240.0

For concrete classes C30/37 and higher the values for C25/30 have to be used

$V_{Rd,1}$

$V_{Rd,2}$

$V_{Rd,max}$

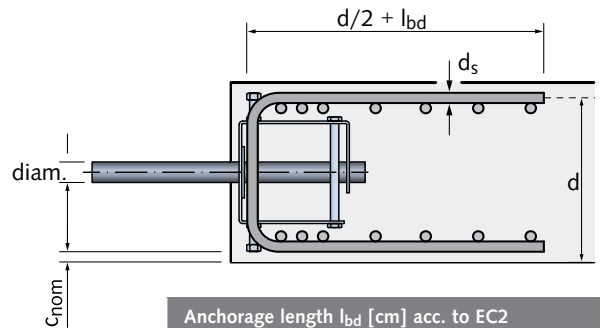
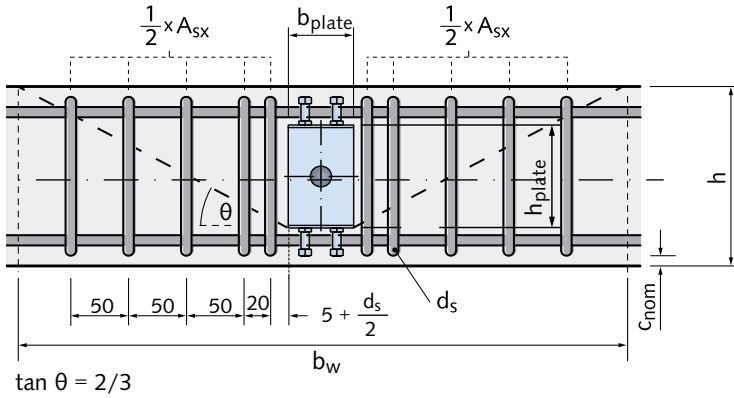
With partial safety factors:  $\gamma_s = 1.15$  EN 1992-1-1:2008;  $\gamma_c = 1.5$  EN 1992-1-1:2008;  $\gamma_{M0} = 1.0$  EN 1993-1-1;  $\gamma_{M2} = 1.25$  EN 1993-1-8

Dimensioning resistances for HSD-CRET 145 V, HSD-CRET 150 V and HSD-CRET 155 V available on request. Adresses → page 23

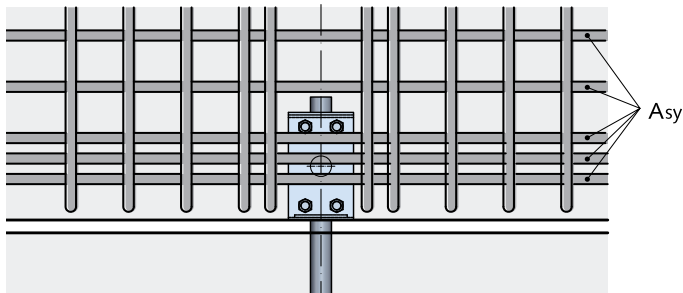
# HALFEN HSD SHEAR DOWEL SYSTEM

## Heavy-duty shear dowels

### In-situ reinforcement



Anchorage length $l_{bd}$ [cm] acc. to EC2		
$d_s$ [mm]	C20/25	C25/30
10	47	40
12	56	48
14	66	57
16	75	65



- $A_{sx}$  Stirrups on both sides as a vertical suspension reinforcement
- $A_{sy}$  Longitudinal reinforcement parallel to the edge, placed above and below according to the bending design of the continuous beam

### Number of stirrups $A_{sx}$ ( $f_{yk} = 500$ MPa)

h [mm]	CRET-122(V)				CRET-124(V)				CRET-128(V)				CRET-134(V)				CRET-140(V)			
	stirrup diameter $d_s$ [mm]																			
	10	12	14	16	10	12	14	16	10	12	14	16	10	12	14	16	10	12	14	16
180	6	4	2	2	-	-	-	-	-	-	-	-	-	-	-	-	-	-	-	-
200	6	4	2	2	8	4	4	2	-	-	-	-	-	-	-	-	-	-	-	-
220	6	4	4	2	8	6	4	2	-	-	-	-	-	-	-	-	-	-	-	-
240	6	4	4	2	8	6	4	2	10	6	4	4	-	-	-	-	-	-	-	-
250	6	4	4	2	8	6	4	2	10	6	4	4	-	-	-	-	-	-	-	-
260	6	4	4	2	8	6	4	4	10	6	4	4	-	-	-	-	-	-	-	-
280	6	4	4	2	8	6	4	4	10	6	4	4	-	-	-	-	-	-	-	-
300	6	4	4	2	8	6	4	4	10	6	4	4	-	10	6	4	-	-	-	-
320	6	4	4	2	8	6	4	4	10	6	4	4	-	10	6	4	-	-	-	-
340	6	4	4	2	8	6	4	4	10	6	4	4	-	10	6	4	-	-	-	-
350	6	4	4	2	8	6	4	4	10	6	4	4	-	10	6	4	-	-	8	6
360	6	4	4	2	8	6	4	4	10	6	4	4	-	10	6	4	-	-	8	6
380	6	4	4	2	6	4	4	4	10	6	4	4	-	10	6	4	-	-	8	6
400					6	4	4	2	8	6	4	4	-	8	6	4	-	-	8	6
420									8	6	4	4	-	8	6	4	-	-	8	6
440									8	6	4	4	-	8	6	4	-	-	8	6
450													-	8	6	4	-	-	8	6
460													-	8	6	4	-	-	8	6
480													-	8	6	4	-	-	8	6
500													10	8	6	4	-	-	8	6
520																	-	10	8	6
540																	-	10	8	6

Advice: The reinforcement layout in the above table can be used for all cases in the load tables pages 7-8. 50% of the stirrups from the above table have to be placed on each side of the dowel.

# HALFEN HSD SHEAR DOWEL SYSTEM

## Heavy-duty shear dowels

### HALFEN Dimensioning Software

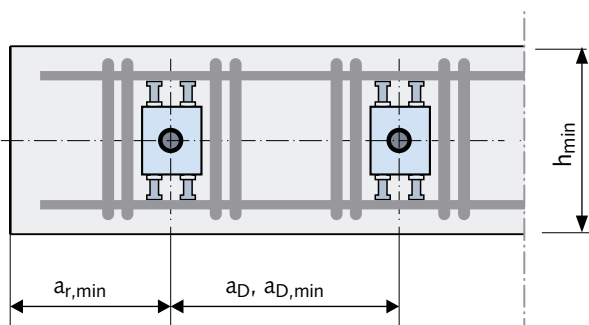
For an optimised suspension reinforcement, please use the HSD-CRET design program, downloadable from: [www.halfen.com](http://www.halfen.com) (→ country code)  
If required, a DVD with all design programs, catalogues and approvals is also available.



### Installation dimensions

Minimum spacings				
HSD-CRET-	HSD-CRET-	Minimum component thickness $h_{min}$ [cm]	Minimum dowel spacing $a_{D,min}$	Minimum edge distance $a_{r,min}$
122	122 V	18	$\frac{V_{Ed,i}}{V_{Rd,c}}$	$\frac{1}{2} \cdot \frac{V_{Ed,i}}{V_{Rd,c}}$
124	124 V	20		
128	128 V	24		
134	134 V	30		
140	140 V	35		
145	145 V	42		
150	150 V	60		
155	155 V	65		

In order to obtain a linear support, it is recommended that the centre spacing of the dowels should not be above the limit of  $10 \cdot h$ . The optimum is  $5 \cdot h$ .



### Calculation acc. to EN 1992-1-1:2008 (section 6)

$V_{Rd}$  acc. page 7 - 8

$$V_{Rd,c} = (C_{Rd,c} \cdot k \cdot (100 \cdot \rho_L \cdot f_{ck})^{1/3} + k_1 \cdot \sigma_{cp}) \cdot d \quad [\text{kN/m}] \quad (6.2a)$$

with a minimum of:

$$V_{Rd,c} = (v_{min} + k_1 \cdot \sigma_{cp}) \cdot d \quad (6.2b)$$

$$v_{min} = 0.035 \cdot k^3 \cdot \sqrt{f_{ck}} \quad (6.3)$$

$h_{min}$  acc. adjacent table

where:  $\rho_L = \frac{A_{sx}}{b_w \cdot d}$

$$b_w = \text{width of the concrete cone} \\ = b_{plate} + \frac{3}{2} (h + h_{plate})$$

$A_{sx}$  acc. page 9 [mm<sup>2</sup>]

If  $a_D < 2 \cdot h_{min}$ , the design resistance  $V_{Rd}$  (acc. pages 7 and 8)

has to be reduced by the quotient of:  $a_D / a_{D,min}$ , **only** if

$V_{Rd,max}$  is the determinant resistance.

$a_D$  = centre spacing between the dowels

$a_{D,min}$  = minimum dowel spacing

$a_{r,min}$  = minimum edge spacing

⚠ If  $a_D < a_{D,min}$ , shear reinforcement has to be provided in the slab

coefficient:  $C_{Rd,c} = 0,18/\gamma_c = 0,12$

size factor:  $k = 1 + \sqrt{\frac{200}{d}} \leq 2$  mit  $d$  in mm

coefficient:  $k_1 = 0,10$

compressive concrete stress from axial load or prestressing:  $\sigma_{cp}$

# HALFEN HSD SHEAR DOWEL SYSTEM

## Heavy-duty shear dowels

### Design example - slab

#### Input

Design shear force:  $v_{Ed} = 50 \text{ kN/m}$

Advice: All calculations of HSD-CRET dowels are done with partial safety factors according to EN 1992-1-1:2008.

Concrete: C25/30  $\rightarrow f_{ck} = 25 \text{ MPa}$ ,  $\gamma_c = 1.5$  (EN 1992-1-1:2008)

Concrete cover:  $c_{nom} = 30 \text{ mm}$

Slab thickness:  $h = 280 \text{ mm} \rightarrow$  effective depth  $d = h - c_{nom} - \text{diam.}/2 = 245 \text{ mm}$

Advice: Diameter of the bending reinforcement perpendicular to the joint (here 10 mm)

Joint length:  $L = 10 \text{ m}$

Designed joint width:  $f = 30 \text{ mm}$  (20 mm + 10 mm)

Advice: The designed joint width should be the maximum value that can appear during building utilization. In case of lack of detailed information it is recommended to increase nominal joint width with additional 10 mm.

#### Number of dowels

##### Preliminary dowel choice HSD-CRET-124 with parameters:

Load capacity  $V_{Rd} = 108.8 \text{ kN}$  (page 7)

Minimum slab thickness  $h_{min} = 200 \text{ mm} \leq h = 280 \text{ mm}$  (page 9)  $\rightarrow$  condition fulfilled

Sum of loading on the joint:  $V_{Ed} = L \cdot v_{Ed} = 10 \cdot 50 = 500 \text{ kN}$

Minimum number of dowels in the joint:  $n_{min} = V_{Ed} / V_{Rd} = 500 / 108.8 = 4.59 \text{ pcs.} \rightarrow$  chosen 5 dowels

Distance between dowels:  $a_D = L / n_{min} = 10 / 5 = 2.0 \text{ m}$

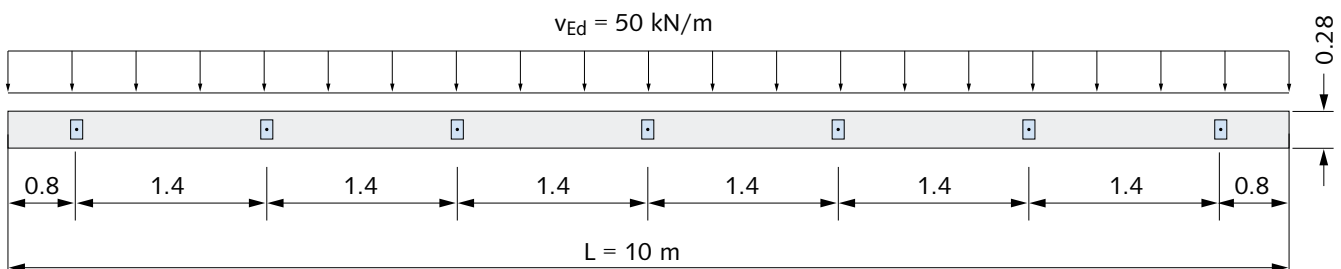
##### Proof of maximum distance between dowels

Advice: Basis of this proof is the condition that the maximum distance between the dowels should not exceed  $5 \cdot h$ . Although it is a recommended condition, the designer can also define larger maximum distances between the dowels, but should not exceed  $10 \cdot h$ .

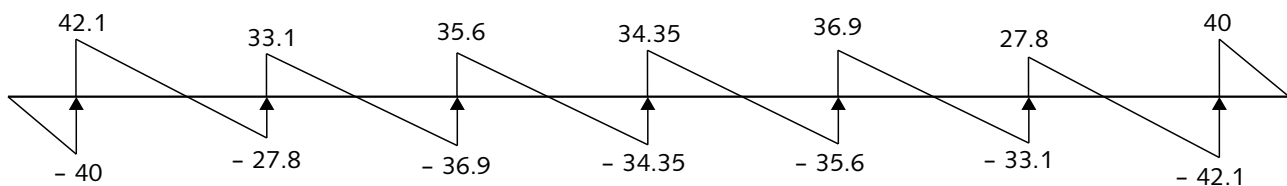
Maximum distance between dowels:

$a_{D,max} = 5 \cdot h = 5 \cdot 0.28 = 1.4 \text{ m} \leq a_D = 2.0 \text{ m} \rightarrow$  it is necessary to increase the number of dowels, because of exceeding  $a_{D,max}$

Number of dowels in the joint:  $n = L / a_{D,max} = 10 / 1.4 = 7.14 \text{ pcs.} ;$  chosen 7 dowels with arrangement as on the drawing below



##### Shear force distribution for continuous beam $V_{Ed}$ [kN]:



$\max V_{Ed,i} = 82.1 \text{ kN} \leq V_{Rd} = 108.8 \text{ kN} \rightarrow$  condition fulfilled

# HALFEN HSD SHEAR DOWEL SYSTEM

## Heavy-duty shear dowels

### Design example - slab

#### Additional slab reinforcement

Suspension reinforcement

From the table on page 9 it is taken reinforcement 8 diam. 10 placed as on the drawing beside according to recommendations from page 10.

Advice: Optimal calculation of the reinforcement can be done with the HSD-CRET design program.

#### Longitudinal reinforcement

Longitudinal reinforcement should be calculated acc. to the bending design of a continuous beam with support points according to dowel arrangement.

#### Proof of slab shear capacity and minimum distance between dowels

Slab shear capacity  $v_{Rd,c}$  (EN 1992-1-1: 2008 sect. 6.2.2)

$$v_{Rd,c} = [C_{Rd,c} \cdot k (100 \cdot \rho_l \cdot f_{ck})^{\frac{1}{3}} + k_1 \cdot \sigma_{cp}] d$$

but not less than  $v_{Rd,c} = v_{min} + k_1 \sigma_{cp}$   
(EN 1992-1-1:2008, 6.2a and 6.2b)

where:  $k = 1 + \sqrt{200/d} = 1 + \sqrt{200/245} = 1.90 \leq 2.0$

$$C_{Rd,c} = 0.18 / \gamma_c = 0.18 / 1.5 = 0.12$$

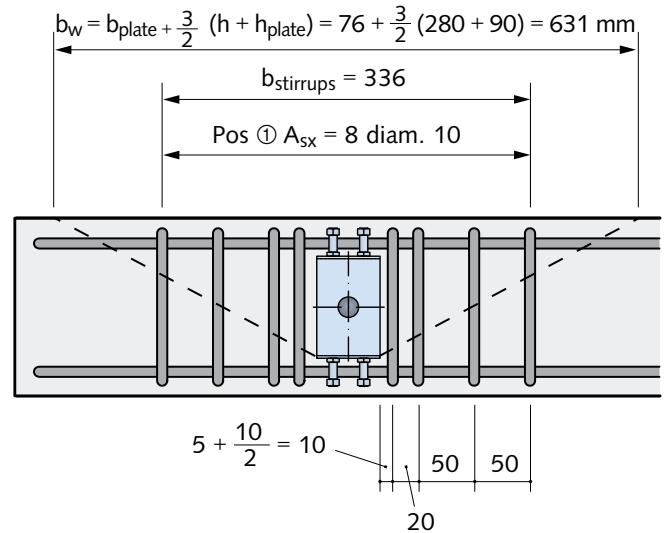
$$\rho_L = \frac{A_{sx}}{b_w \cdot d} = \frac{628}{631 \cdot 245} = 0.0041 \leq 0.02$$

$k_1 \cdot \sigma_{cp} = 0$ ; because slab is not pre-stressed

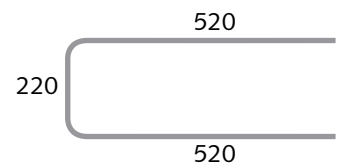
$$v_{min} = 0.035 k^{\frac{2}{3}} \cdot f_{ck}^{\frac{1}{2}} = 0.035 \cdot 1.90^{\frac{2}{3}} \cdot 25^{\frac{1}{2}} = 0.46$$

$$v_{Rd,c} = (0.12 \cdot 1.90 \cdot (100 \cdot 0.0041 \cdot 25)^{\frac{1}{3}} + 0) \cdot 245 = 121.2 > (0.46 + 0) \cdot 245 = 112.6 \text{ kN/m}$$

Slab shear capacity  $v_{Rd,c} = 121.1 \text{ kN/m}$



Pos ① 8 diam. 10 L = 1260



#### Proof of minimum distance between dowels

$$a_{D,min} = V_{Ed,i} / v_{Rd,c}$$

$$V_{Ed,i} / v_{Rd,c} = 82.1 / 121.2 = 0.68 \text{ m}$$

$a_{D,min} = 0.68 \leq a_D = 1.40 \rightarrow$  condition fulfilled, no shear reinforcement required

$$a_D = 1.4 \text{ m} > 2 \cdot h_{min} = 2 \cdot 0.2 = 0.4 \text{ m} \rightarrow$$
 condition fulfilled

reinforcement ratio  $\rho_L = 0.0041$  must be provided in area  $a_{D,min}/2$ , right and left-hand of the dowel

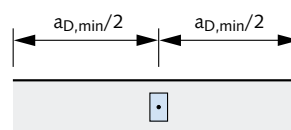
#### Proof of minimum edge distance

$$a_{r,min} = a_{D,min} / 2$$

$$= 0.68 / 2$$

$$= 0.34 \text{ m} \leq a_r = 0.80 \text{ m} \rightarrow$$
 condition fulfilled

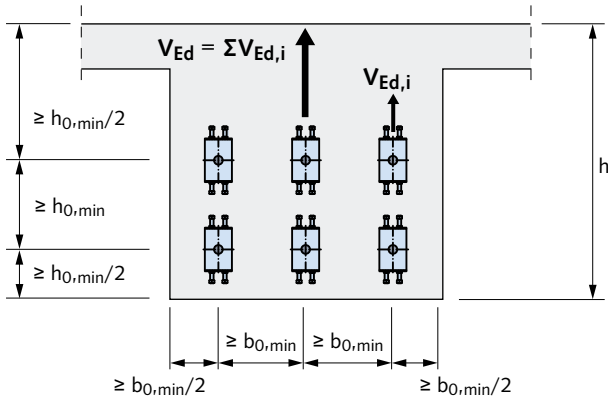
$$h_{min} = 0.2 \text{ m} < a_r = 0.80 \text{ m} \rightarrow$$
 condition fulfilled



# HALFEN HSD SHEAR DOWEL SYSTEM

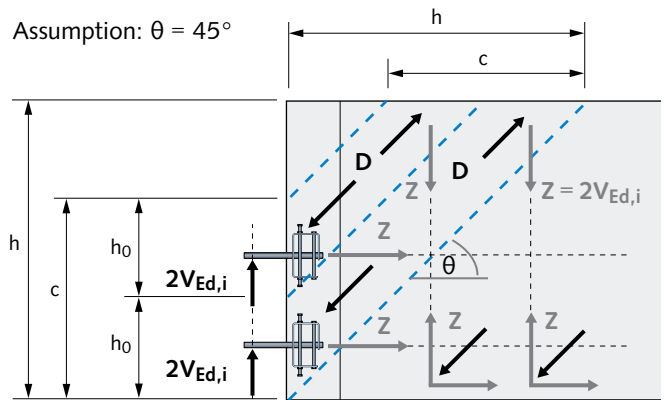
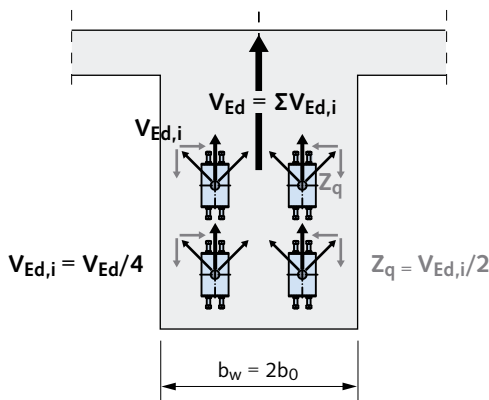
## Heavy-duty shear dowels

### Minimum dimensions of beam-webs and minimum dowel distances



Minimum dowel distances		
CRET - 122	$b_{0,min} = 180 \text{ mm}$	$h_{0,min} = 180 \text{ mm}$
CRET - 124	$b_{0,min} = 200 \text{ mm}$	$h_{0,min} = 200 \text{ mm}$
CRET - 128	$b_{0,min} = 250 \text{ mm}$	$h_{0,min} = 240 \text{ mm}$
CRET - 134	$b_{0,min} = 300 \text{ mm}$	$h_{0,min} = 300 \text{ mm}$
CRET - 140	$b_{0,min} = 350 \text{ mm}$	$h_{0,min} = 350 \text{ mm}$
CRET - 145	$b_{0,min} = 400 \text{ mm}$	$h_{0,min} = 420 \text{ mm}$
CRET - 150	$b_{0,min} = 500 \text{ mm}$	$h_{0,min} = 600 \text{ mm}$
CRET - 155	$b_{0,min} = 600 \text{ mm}$	$h_{0,min} = 650 \text{ mm}$

### Design of beam connections, strut and tie model (truss theory)



### Verification of the shear force load capacity acc. to (EN 1992-1-1: 2005)

$$V_{Ed} \leq \min(V_{Rd,max}; V_{Rd,s})$$

$$V_{Rd,max} = \alpha_{cw} \cdot b_w \cdot z \cdot v_1 \cdot f_{cd} / (\cot \theta + \tan \theta)$$

where:

$$\alpha_{cw} = 1.0$$

$$v_1 = 0.6 \cdot [1 - f_{ck}/250]$$

$$z = 0.9 \cdot d$$

$$V_{Rd,s} = \frac{A_{sw}}{s} \cdot z \cdot f_{ywd} \cdot \cot \theta$$

$f_{ywd}$  design yield strength of the shear reinforcement  
 $s$  spacing of the stirrups  
 $z$  lever arm of internal forces

### Reinforcement in the area of force introduction

- Vertical stirrups at the end of the girder, distributed in area  $c$   $A_{sw} = V_{Ed} \cdot s / (z \cdot f_{ywd} \cdot \cot \theta)$  [Pos 1]
- Vertical reinforcement per dowel, U-shaped  $A_{sw} = V_{Ed,i} / f_{yd}$  [Pos 2]
- Vertical reinforcement, face of beam \*  $A_{sw} = V_{Ed,i} / f_{yd}$  [Pos 3]
- Horizontal transverse reinforcement per dowel row, face of beam  $A_{sw} = 0.5 \cdot V_{Ed,i} / f_{yd}$  [Pos 4]

$$V_{Ed,i} = V_{Ed}/n \quad \text{with } n = \text{number of dowels}$$

\* Advice: Bottom reinforcement has to be calculated for a tension force  $V_{Ed}$ . And it has to be totally anchored at beam end with hook or loop. Otherwise  $A_{sw} = 2 \cdot V_{Ed,i} / f_{yd}$

# HALFEN HSD SHEAR DOWEL SYSTEM

## Heavy-duty shear dowels

### Design example - beams

#### Input

Connection beam column,  $V_{Ed} = 750 \text{ kN}$   
 Choice:  $4 \times \text{HSD-CRET 134}$ , Concrete C25/30;  $\gamma_c = 1.5$

$b_w = 600 \text{ mm}$ ;  $h = 800 \text{ mm}$   
 $d = 760 \text{ mm}$   
 Joint width  $f = 30 \text{ mm}$

#### Calculation

$V_{Rd,i}$  according table page 7  $\rightarrow V_{Rd,i} = 219.3 \text{ kN}$   
 $4 \cdot V_{Rd,i} = 4 \cdot 219.3 = 877.2 \text{ kN} > 750 \text{ kN} = V_{Ed}$

#### Minimum dimensions

$\min b_w = 150 + 300 + 150 = 600 \text{ mm} \geq b_w = 600 \text{ mm}$   
 $\min h = 150 + 300 + 150 = 600 < h_{ef} = 800 \text{ mm}$

#### Proof of the resistance of the compression struts

$\alpha_{cw} = 1.0$   
 $v_1 = 0.6 \cdot [1 - f_{ck}/250] = 0.54$   
 $z = 0.9 \cdot d = 0.9 \cdot 760 \text{ mm} = 684 \text{ mm}$   
 $\cot \theta = 1.0$ ;  $\tan \theta = 1.0$

$V_{Rd,max} = 1.0 \cdot 600 \cdot 684 \cdot 0.54 \cdot 25/1.5/(1+1) =$

**$1847 \text{ kN} > 750 \text{ kN} = V_{Ed}$**

#### Reinforcement

##### Pos 1

Due to  $V_{Rd,s} \geq V_{Ed} \rightarrow \text{req. } A_{sw}$   
 $= V_{Ed} \cdot s / (z \cdot f_{ywd} \cdot \cot \theta)$   
 $= 750 \cdot 10^3 \cdot 150 / (684 \cdot 435 \cdot 1)$   
 $= 378 \text{ mm}^2 \text{ per row}$

Choice: diam.12,  $s = 150 \text{ mm}$ , 4-cutting,  
 distributed in area  $c$   
 $\rightarrow \text{prov. } A_{sw} = 452 \text{ mm}^2 \text{ per row}$

##### Pos 2

$A_{sw} = V_{Ed,i} / f_{yd} = 187.5 \cdot 10^3 / 435 = 431 \text{ mm}^2$   
 Choice: 2 diam.12 per dowel, U-shaped  
 $\rightarrow \text{prov. } A_{sw} = 452 \text{ mm}^2$

##### Pos 3

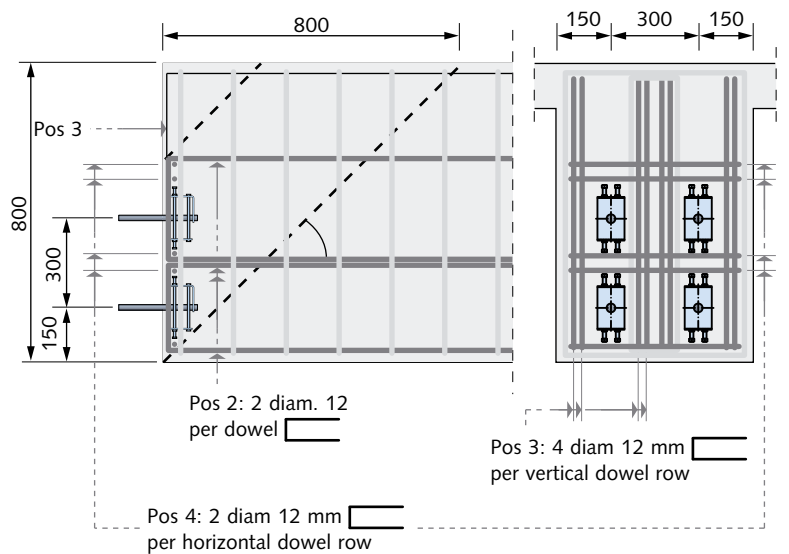
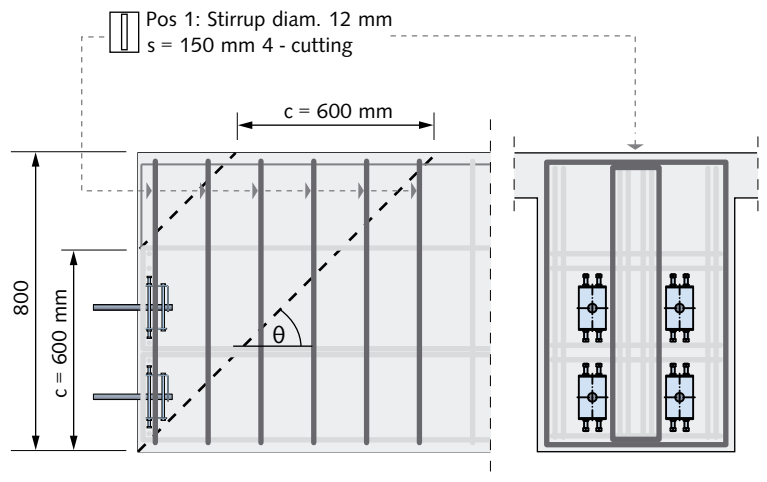
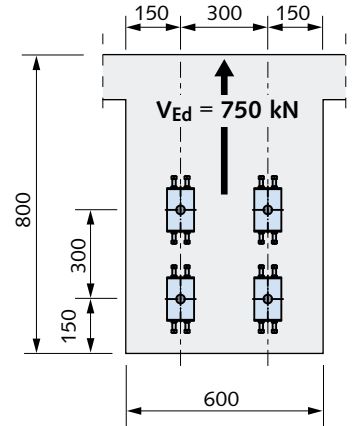
$A_{sw} = V_{Ed,i} / f_{yd} = 187.5 \cdot 10^3 / 435 = 431 \text{ mm}^2$   
 Choice: 4 diam.12 per vertical dowel row, U-shaped  
 $\rightarrow \text{prov. } A_{sw} = 452 \text{ mm}^2$

##### Pos 4

$A_{sw} = 0.5 \cdot V_{Ed,i} / f_{yd} = 93.8 \cdot 10^3 / 435 = 215 \text{ mm}^2$   
 Choice: 2 diam.12 per horizontal dowel row, U-shaped  
 $\rightarrow \text{prov. } A_{sw} = 226 \text{ mm}^2$

Pos 1: 4 - cutting  
 Pos 2: 2 - cutting  
 Pos 3: 1 - cutting  
 Pos 4: 1 - cutting

Positions 2 and 3 have to be anchored with  $l_{bd}$  outside the area of load introduction (area  $c$ )



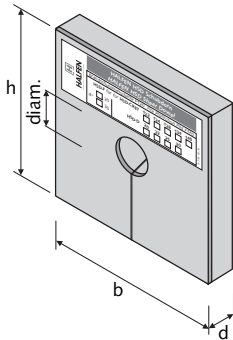


# HALFEN HSD SHEAR DOWEL SYSTEM

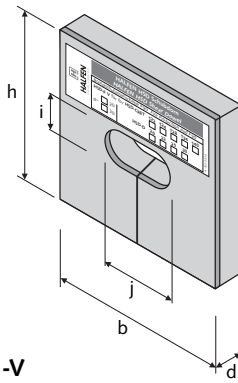
## Fire protection

### HSD-F Fire protection pad

If fire protection is required for components according to DIN 4102 T.2, we recommend to install the HALFEN HSD Shear dowels with fire protection pads.



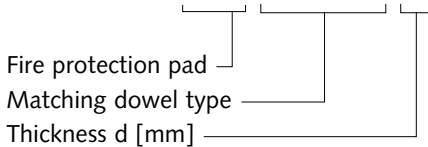
**HSD-F**  
for shear dowels HSD, longitudinal movement



**HSD-F -V**  
for shear dowels HSD, longitudinal and transverse movement

### Ordering example:

**HSD-F - CRET 124 V - 30**



For requirements - smoke tight "enclosure of space" - according to DIN EN 1366-4 in combination with DIN EN 1363-1, we recommend to use the joint element **PROMASEAL-PL** (see fig.).

For the combination of HALFEN Shear dowel with PROMASEAL-PL the enclosing design function and the fire resistance classification F90 is confirmed by the MFPA Leipzig.

The fire protection pad can be supplied 20 mm ( $d = 20$ ) and 30 mm ( $d = 30$ ) thick. For larger joint widths, a combination of fire protection pads is possible.

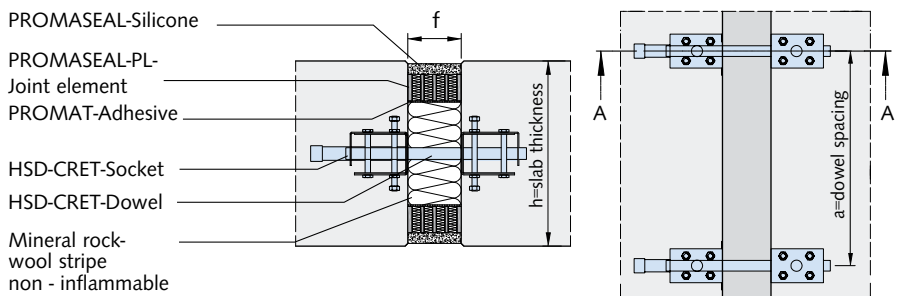
The fire-resistance classification F120 (longitudinal movement) or F90 (longitudinal and transverse movement) is confirmed by the MFPA Leipzig.

**Installation of HALFEN HSD-F Fire protection pad**

Note: The HSD-F Fire protection pad consists of a material that will produce foam in case of a fire and will tightly seal the joint.

### Fire protection pad selection

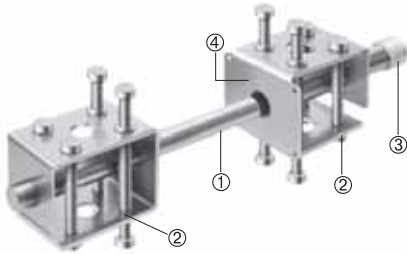
matching the HALFEN HSD Shear dowel -	Item name	h / b	diam. or i	j
	$d = 20 \Rightarrow f \leq 30$			
	$d = 30 \Rightarrow f \leq 40$			
Heavy-duty dowel, longitudinal movement				
CRET 122	<b>HSD-F-CRET 122 -d</b>	120 / 120	23	
CRET 124	<b>HSD-F-CRET 124 -d</b>	130 / 130	25	
CRET 128	<b>HSD-F-CRET 128 -d</b>	140 / 140	29	
CRET 134	<b>HSD-F-CRET 134 -d</b>	180 / 160	35	
CRET 140	<b>HSD-F-CRET 140 -d</b>	220 / 180	41	
Single dowel, longitudinal movement				
Set 20	<b>HSD-F 20 -d</b>	110 / 110	21	
Set 22	<b>HSD-F 22 -d</b>	110 / 110	23	
Set 25	<b>HSD-F 25 -d</b>	110 / 110	26	
Set 30	<b>HSD-F 30 -d</b>	110 / 110	31	
Heavy-duty dowel, longitudinal and transverse movement				
CRET 122 V	<b>HSD-F-CRET 122 V -d</b>	150 / 150	23	46
CRET 124 V	<b>HSD-F-CRET 124 V -d</b>	160 / 160	25	50
CRET 128 V	<b>HSD-F-CRET 128 V -d</b>	170 / 170	29	58
CRET 134 V	<b>HSD-F-CRET 134 V -d</b>	190 / 190	35	70
CRET 140 V	<b>HSD-F-CRET 140 V -d</b>	220 / 210	41	82
Single dowel, longitudinal and transverse movement				
Set 20 V	<b>HSD-F 20 V -d</b>	110 / 160	21	42
Set 22 V	<b>HSD-F 22 V -d</b>	110 / 160	23	50
Set 25 V	<b>HSD-F 25 V -d</b>	110 / 160	26	56
Set 30 V	<b>HSD-F 30 V -d</b>	110 / 160	31	62



# HALFEN HSD SHEAR DOWEL SYSTEM

## Heavy-duty shear dowels

### Assembly instructions for HALFEN HSD-CRET heavy-duty shear dowels



- ① Dowel
- ② Load distribution body
- ③ Sliding socket
- ④ Nail plate for the fixation of the socket to the formwork



HSD-CRET sliding sockets nailed onto the formwork

#### First concreting section

The sliding sockets are fixed to the formwork by nailing (illustrations 1 and 2); in doing this, it must be ensured that the sockets are exactly aligned in the sliding direction.

The label applied over the opening in the socket protects the socket against the entry of concrete, and must therefore not be removed.

The in-situ junction and suspension reinforcement is to be installed according to the information from the static calculations and the reinforcement plan.

#### Second concreting section

After removing the formwork from the first concreting section, the filling material is placed into the joint (illustration 3). The joint width specified in the plan must be complied with exactly.

A recess in the filling material has to be provided so that the dowels can be inserted into the sockets. The required joint reinforcement is to be installed

according to the data from the static calculations and the reinforcement plans. The use of the shear dowels without additional measures for environmental conditions according to DIN 1045-1 is permissible.

In the case of environmental conditions with higher requirements on corrosion protection, the dowels and the sliding sockets are to be well coated with a corrosion protection compound, e.g. on a petroleum basis. If a higher fire resistance duration is specified in the reinforcement plan, non-inflammable material must be used as filling material in the joints (e.g. mineral fibre with a relative density of approx. 110 kg/m<sup>3</sup> according to DIN 4102 T 4).

If there are fire protection requirements on the construction components according to DIN 4102 T.2, we recommend the installation of the HALFEN HSD Shear dowels with fire protection pad (see page 15).

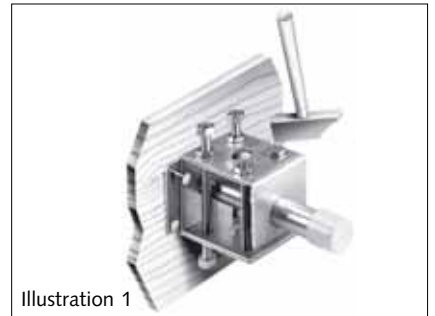


Illustration 1

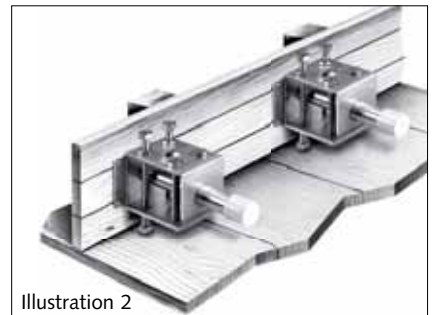


Illustration 2

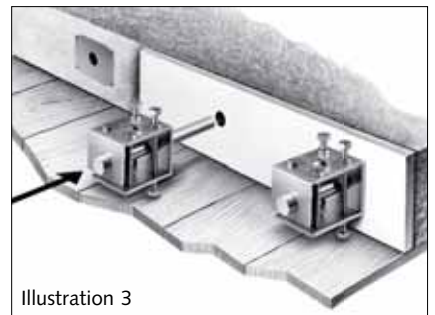
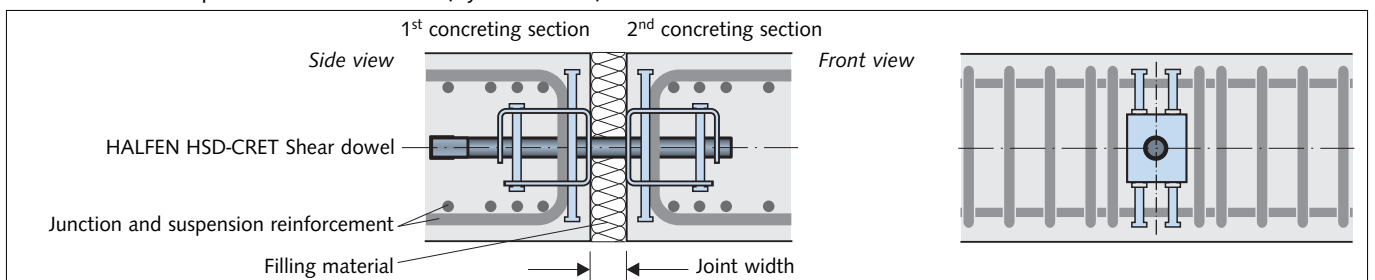


Illustration 3

#### Additional and suspension reinforcement (by contractor)



# HALFEN HSD SHEAR DOWEL SYSTEM

## Single shear dowels

### Product description

HALFEN Single shear dowels HSD allow sliding in the direction of the member axis. The dowels are normally used to transmit shear loads in any direction.

If lateral movements have to be taken into account, the HSD-SV sockets are used, which permit a sideways movement, i.e. the shear load will only be transmitted in one direction.

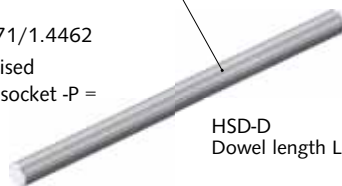
HALFEN Single shear dowels HSD-D require no official approval.

#### Single shear dowel HSD-D

Material / finish:

A4 = Stainless steel grade 1.4571/1.4462

FV = Steel S355, hot-dip galvanised  
(only in combination with socket -P = plastic)



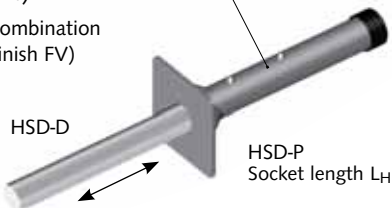
#### Socket HSD-S (longitudinal movement)

Material: Stainless steel A2



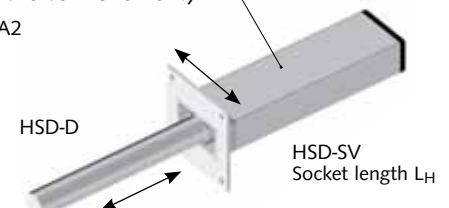
#### Socket HSD-P (longitudinal movement)

Material: Plastic (only in combination with dowel in material / finish FV)



#### Socket HSD-SV (longitudinal and transverse movement)

Material: Stainless steel A2



### Dimensions of single shear dowels and sockets

Dowel type	Single shear dowel		Sliding sockets HSD-P, -S		Sliding sockets HSD-SV	
	Dowel diam. [mm]	Dowel length L [mm]	Socket length L <sub>H</sub> [mm]	Nail plate width/height [mm]	Socket length L <sub>H</sub> [mm]	Nail plate width/height [mm]
HSD-D 20	20	300	160	70/70	180	80/80
HSD-D 22	22	300	160	70/70	180	80/80
HSD-D 25	25	300	160	70/70	180	80/80
HSD-D 30	30	350	185	80/80	205	100/80

### Ordering examples:

- Dowel: HSD-D 22 -A4**  
 HALFEN Shear dowel  
 Diameter [mm]  
 A4 = Stainless steel A4 material
- Sliding socket: HSD-SV 22**  
 HALFEN Sliding socket  
 - S = Stainless steel A2  
 - SV = ditto, transverse and longitudinal movement  
 - P = Plastic for dowel diameter [mm]
- Set (Dowel + sliding socket) HSD-SET 22 V -A4**  
 HALFEN Shear dowel set  
 with dowel diameter [mm]  
 V = Socket transverse and longitudinal movement  
 A4 = Dowel stainless steel A4, Socket S/SV = stainless steel A2

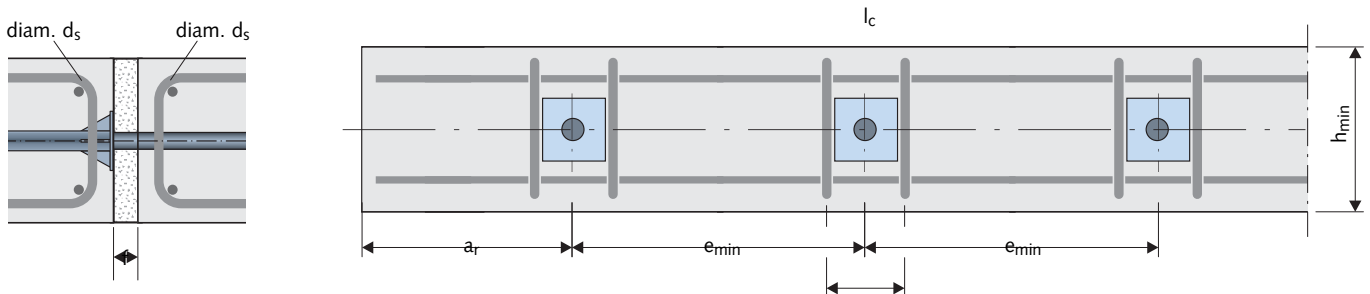
# HALFEN HSD SHEAR DOWEL SYSTEM

## Single shear dowels

### Dimensioning

#### Minimum spacing, Element thickness, Stirrup spacing

Dowel diam. [mm]	Socket	Stirrup diam. $d_s$ [mm]	Component thickness $h_{min}$ [mm]	Stirrup spacing $l_c$ [mm]	Required dowel spacing $e_{min}$ [mm]	Edge distance $a_r$ [mm]	
20	HSD-S + HSD-P	10	160	60	310	160	$l_c$ = Distance between the first two stirrups $h_{min}$ = Minimum component thickness $e_{min}$ = Minimum centre spacing between the single dowels $a_r$ = Minimum edge distance
22		10	160	60	350	175	
25		12	175	70	410	200	
30		14	210	90	560	240	
20	HSD-SV	10	160	80	310	160	
22		10	160	90	350	175	
25		12	175	100	410	200	
30		14	210	110	560	240	



### Dimensioning for non-reinforced concrete

Design resistances HSD-D in non-reinforced concrete according to volume 346, DAfStb (German association for reinforced concrete construction)

Steel load-bearing capacity:

$$V_{Rd,s} = f_{\mu} \cdot 1.25 \cdot (f_{yk} / \gamma_{MS}) \cdot W / (f + \text{diam.})$$

Concrete load-bearing capacity:

$$V_{Rd,c} = 0.4 \cdot f_{ck} \cdot \text{diam.}^2 \cdot 1 / (333 + 12.2 \cdot f)$$

$$0.4 = (\alpha \cdot \gamma_{MW}) / 3$$

where:

- $f_{\mu}$  = 0.9 Reduction factor due to friction [-]
- $f_{yk}$  = yield strength [N/mm<sup>2</sup>]
- $f_{ck}$  = characteristic compressive cylinder strength of concrete [N/mm<sup>2</sup>]
- $f$  = Joint width [mm]
- diam. = Shear dowel diameter [mm]
- $W$  = Section modulus [mm<sup>3</sup>]
- $\gamma_{MS}$  = Material safety factor for steel [-]

- HALFEN Single shear dowels HSD-D require no official approval.
- $\alpha = 0.85$  (consideration of the long-term effects)
- $\gamma_{MW} = 1.425$  (average value from  $\gamma_G = 1.35$  and  $\gamma_Q = 1.5$ )
- Minimum edge distance to the dowel axis  $a_r = 8 \cdot \text{diam.}$  (in all directions)
- Minimum axial distance  $e = 16 \cdot \text{diam.}$

#### Dimensioning resistances $V_{Rd,s}$ and $V_{Rd,c}$ [kN] for non-reinforced concrete

Dowel type	Concrete grade	Dowel-diam. [mm]	Minimum component thickness [mm]	Design resistances [kN] for joint width $f$ [mm]			
				10	20	30	40
HSD-D 20	≥ C20/25	20	320	9.5	7.1	5.7	4.8
HSD-D 22		22	350	11.6	9.0	7.3	6.1
HSD-D 25		25	400	15.2	12.0	9.9	8.4
HSD-D 30		30	480	22.2	17.5	14.5	12.3

# HALFEN HSD SHEAR DOWEL SYSTEM

## Single shear dowels

### Dimensioning for reinforced concrete

Design resistances HSD-D in reinforced concrete according to volume 346, DAfStb (German association for reinforced concrete construction)

Required proofs:

Proof against punching failure  $V_{Rd,ct}$   
(acc. to DIN 1045-1)

Proof against concrete edge failure  $V_{Rd,ce}$   
(acc. to volume 346, DAfStb)

Proof of the steel load capacity  $V_{Rd,s}$

Steel load-bearing capacity:

$$V_{Rd,s} = f_{\mu} \cdot 1.25 \cdot (f_{yk} / \gamma_{MS}) \cdot W / (f + \text{diam.} / 2)$$

$$V_{Rd} = \min (V_{Rd,s}; V_{Rd,c})$$

$V_{Rd,s}$  Dimensioning resistance of the steel load-bearing capacity

$V_{Rd,c}$  Dimensioning resistance of the concrete load-bearing capacity

where:

$f_{\mu}$  = Reduction factor due to friction [-]

$f_{yk}$  = yield strength [N/mm<sup>2</sup>]

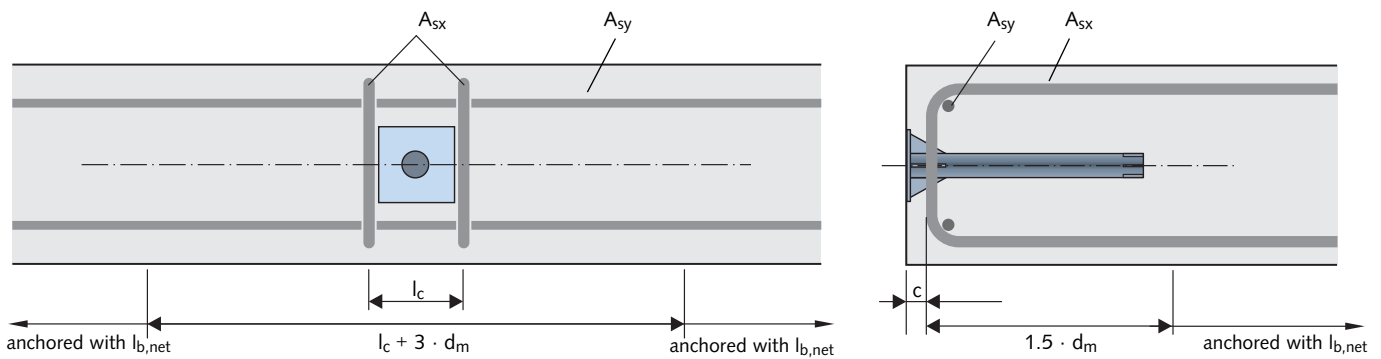
$f$  = Joint width [mm]

diam. = Shear dowel diameter [mm]

$W$  = Section modulus [mm<sup>3</sup>]

$\gamma_{MS}$  = Material safety factor for steel [-]

$d_m$  = effective depth of the cross section



### Proof of the steel load-bearing capacity

#### Design resistances $V_{Rd,s}$ for HSD-S and HSD-P - longitudinal movement - for reinforced concrete

Dowel type	concrete grade	Dowel-diam. [mm]	Design resistances $V_{Rd,s}$ [kN] for joint width $f$ [mm]			
			10	20	30	40
HSD-D 20	≥ C20/25	20	14.3	9.5	7.1	5.7
HSD-D 22		22	18.1	12.2	9.3	7.4
HSD-D 25		25	24.8	17.1	13.1	10.6
HSD-D 30		30	38.5	27.5	21.4	17.5

taking account of friction ( $f_{\mu} = 0.9$ )

#### Design resistances $V_{Rd,s}$ for HSD-SV - longitudinal and transverse movement - for reinforced concrete

Dowel type	concrete grade	Dowel-diam. [mm]	Design resistances $V_{Rd,s}$ [kN] for joint width $f$ [mm]			
			10	20	30	40
HSD-D 20	≥ C20/25	20	12.8	8.6	6.4	5.1
HSD-D 22		22	16.3	11.0	8.3	6.7
HSD-D 25		25	22.3	15.4	11.8	9.5
HSD-D 30		30	34.6	24.7	19.2	15.7

taking account of friction ( $f_{\mu} = 0.81$ )

# HALFEN HSD SHEAR DOWEL SYSTEM

## Single shear dowels

### Dimensioning for reinforced concrete

#### Proof of the concrete load-bearing capacity

The design resistance for the concrete load-bearing capacity is the smallest dimensioning resistance from the concrete edge failure and punching failure proofs:

$A_{sx}$  = Rear suspension reinforcement  
 $A_{sy}$  = Longitudinal reinforcement  
 $l_c$  = Distance between the first two stirrups

#### Dimensioning resistances $V_{Rd,c}$ for HSD-S and HSD-P - longitudinal movement -

Dowel type	Component thickness h [mm]	$c_{nom}$ [mm]	Design resistances $V_{Rd,c}$ [kN] $\geq C20/25$	In-situ reinforcement		Centre spacing $l_c$ [mm]
				$A_{sx}$	$A_{sy}$	
HSD-D 20	$\geq 160$	30	14.2	2 diam. 10	2 diam. 10	60
	$\geq 180$		15.8			
HSD-D 22	$\geq 160$	30	14.2	2 diam. 10	2 diam. 10	60
	$\geq 180$		15.8			
	$\geq 200$		17.3			
	$\geq 220$		18.9			
	$\geq 240$		20.4			
HSD-D 25	$\geq 180$	30	20.5	2 diam.12	2 diam.12	70
	$\geq 200$		22.4			
	$\geq 220$		24.3			
	$\geq 240$		26.2			
HSD-D 30	$\geq 220$	30	28.0	2 diam. 14	2 diam. 14	90
	$\geq 240$		29.3			
	$\geq 260$		31.5			
	$\geq 280$		33.7			
	$\geq 300$		35.9			
	$\geq 320$		38.1			

taking account of friction ( $f_{\mu} = 1.0$ )

#### Dimensioning resistances $V_{Rd,c}$ for HSD-SV - longitudinal and transverse movement-

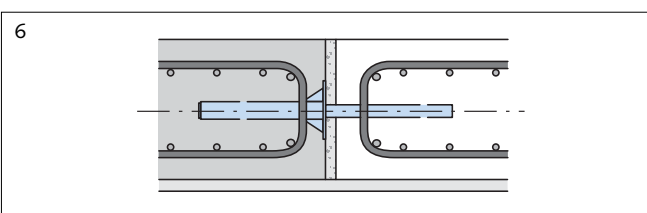
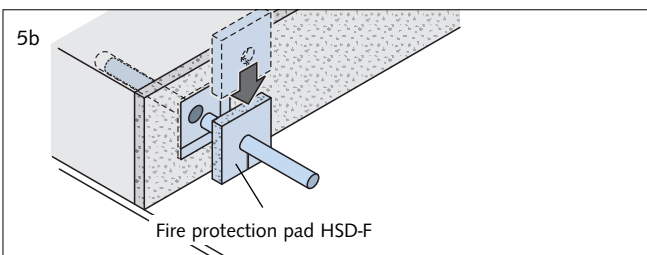
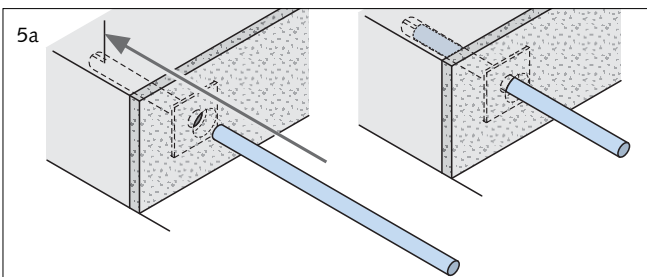
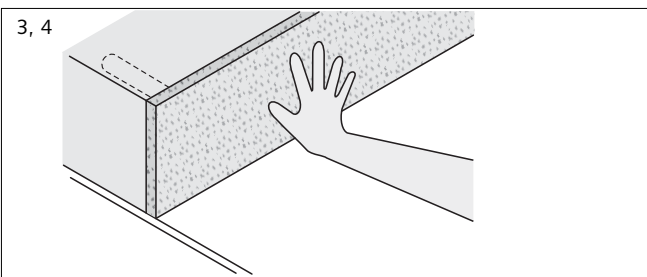
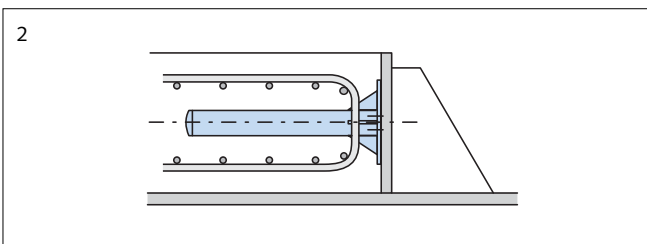
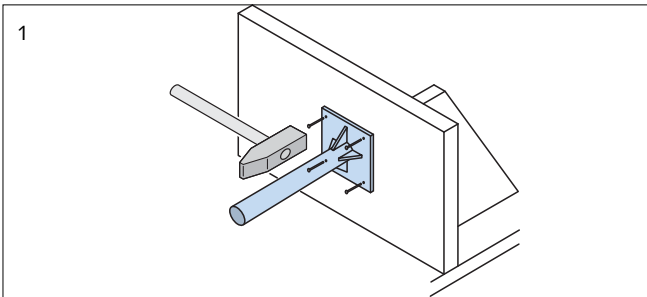
Dowel type	Component thickness h [mm]	$c_{nom}$ [mm]	Design resistances $V_{Rd,c}$ [kN] $\geq C20/25$	In-situ reinforcement		Centre spacing $l_c$ [mm]
				$A_{sx}$	$A_{sy}$	
HSD-D 20	$\geq 160$	30	<sup>5)</sup>	2 diam. 10	2 diam. 10	80
	$\geq 180$		13.0			
HSD-D 22	$\geq 160$	30	<sup>5)</sup>	2 diam. 10	2 diam. 10	90
	$\geq 180$		12.5			
	$\geq 200$		13.9			
	$\geq 220$		15.3			
HSD-D 25	$\geq 240$	30	16.7	2 diam.12	2 diam.12	100
	$\geq 180$		<sup>5)</sup>			
	$\geq 200$		18.0			
	$\geq 220$		19.8			
HSD-D 30	$\geq 240$	30	21.5	2 diam. 14	2 diam. 14	110
	$\geq 260$		23.2			
	$\geq 220$		24.6			
	$\geq 240$		26.7			
	$\geq 260$		28.7			
	$\geq 280$		30.7			

taking account of friction ( $f_{\mu} = 0.9$ ) <sup>5)</sup> No rear suspension stirrup in the break-out cone

# HALFEN HSD SHEAR DOWEL SYSTEM

## Single shear dowels

### Assembly instructions for HSD single shear dowels



#### 1. Fixing to the formwork

Nail the socket onto the formwork according to the specified position. Important: The socket must be aligned exactly in the direction of slide.

**NOTE:** Do not remove the label. This protects the socket from the penetration of fresh concrete.

#### 2. Reinforcement

Laying of the in-situ joint and rear suspension reinforcement, as well as the component reinforcement, in the 1<sup>st</sup> concreting-section.

#### 3. Protective label

The protective label can be removed from the socket after the concreting and the removal of the formwork.

#### 4. Joint material

Application of the joint material. The positions of the shear dowel sockets are to be exactly marked where necessary.

#### 5. a) Shear dowel

The dowel that matches the socket is now inserted through the joint material and is pushed into the socket up to the stop (safety plug).

#### 5. b) Shear dowel

In the case of fire protection requirements according to DIN 4102, a recess is to be provided in the joint material for the HALFEN fire protection pad.

#### 6. Concreting

Positioning of the reinforcement (by contractor) and concreting the 2<sup>nd</sup> concreting-section.

# HALFEN HSD SHEAR DOWEL SYSTEM

## Tender specification and software

### Text for invitation to tender

#### HALFEN Heavy-duty shear dowel HSD-CRET ...

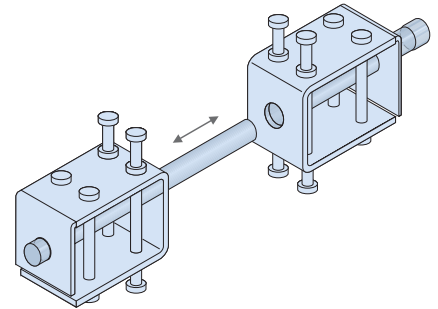
HALFEN Shear dowel system HSD with technical approval No.: Z-15.7-253, or equivalent, for the transfer of shear forces in expansion joints between components made of steel reinforced concrete. Delivery of dowel- and sleeve, installation according to instructions of the producer.

Shear dowel with technical approval No.: Z-15.7-253, movable in longitudinal direction.

- Dowel: stainless steel S690 (grade: 1.4462).
- Anchorage box: stainless steel S275 (grade: 1.4404).
- Fixing rods: Stainless steel class 70 (grade: 1.4401).
- All components fulfil at minimum the requirements of corrosion-resistance-class III.
- Maximum joint width is 60 mm.

Dowel diameter \_\_ mm,  
\_\_\_\_\_ pcs.

Suspension reinforcement according to specifications of the producer or designer.



#### HALFEN Heavy-duty shear dowel HSD-CRET ... V

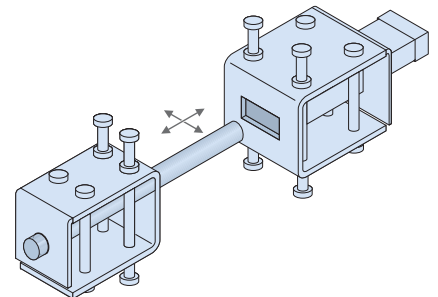
HALFEN Shear dowel system HSD-V with technical approval No.: Z-15.7-253, or equivalent, for the transfer of shear forces in expansion joints between components made of steel reinforced concrete. Delivery of dowel- and sleeve, installation according to instructions of the producer.

Shear dowel with technical approval No.: Z-15.7-253, movable in longitudinal and transverse direction.

- Dowel: stainless steel S690 (grade: 1.4462).
- Anchorage box: stainless steel S275 (grade: 1.4404).
- Fixing rods: Stainless steel class 70 (grade: 1.4401).
- All components fulfil at minimum the requirements of corrosion-resistance-class III.
- Maximum joint width is 60 mm.

Dowel diameter \_\_ mm,  
\_\_\_\_\_ pcs.

Suspension reinforcement according to specifications of the producer or designer.



More submission texts are available at [www.halfen.com](http://www.halfen.com)

### Software



The most recent version of the design program is available on the Internet for downloading at [www.halfen.com](http://www.halfen.com). (→ country code)

If required, a DVD with all design programs, catalogues and approvals is also

available. You will find our contact address on the adjacent page of this brochure. System requirements for the HALFEN HSD design software:

- Windows XP, Vista, Windows 7
- Microsoft .Net Framework 3.0







**Leviat<sup>®</sup>**  
A CRH COMPANY

Innovative engineered products and construction solutions that allow the industry to build safer, stronger and faster.



## Worldwide contacts for Leviat:

### Australia

#### Leviat

98 Kurrajong Avenue,  
Mount Druitt Sydney, NSW 2770  
Tel: +61 - 2 8808 3100  
Email: info.au@leviat.com

### Austria

#### Leviat

Leonard-Bernstein-Str. 10  
Saturn Tower, 1220 Wien  
Tel: +43 - 1 - 259 6770  
Email: info.at@leviat.com

### Belgium

#### Leviat

Borkelstraat 131  
2900 Schoten  
Tel: +32 - 3 - 658 07 20  
Email: info.be@leviat.com

### China

#### Leviat

Room 601 Tower D, Vantone Centre  
No. A6 Chao Yang Men Wai Street  
Chaoyang District  
Beijing · P.R. China 100020  
Tel: +86 - 10 5907 3200  
Email: info.cn@leviat.com

### Czech Republic

#### Leviat

Business Center Šafránková  
Šafránková 1238/1  
155 00 Praha 5  
Tel: +420 - 311 - 690 060  
Email: info.cz@leviat.com

### France

#### Leviat

18, rue Goubet  
75019 Paris  
Tel: +33 - 1 - 44 52 31 00  
Email: info.fr@leviat.com

### Germany

#### Leviat

Liebigstrasse 14  
40764 Langenfeld  
Tel: +49 - 2173 - 970 - 0  
Email: info.de@leviat.com

### Italy

#### Leviat

Via F.lli Bronzetti N° 28  
24124 Bergamo  
Tel: +39 - 035 - 0760711  
Email: info.it@leviat.com

### Malaysia

#### Leviat

28 Jalan Anggerik Mokara 31/59  
Kota Kemuning, 40460 Shah Alam  
Selangor  
Tel: +603 - 5122 4182  
Email: info.my@leviat.com

### Netherlands

#### Leviat

Oostermaat 3  
7623 CS Borne  
Tel: +31 - 74 - 267 14 49  
Email: info.nl@leviat.com

### New Zealand

#### Leviat

2/19 Nuttall Drive, Hillsborough,  
Christchurch 8022  
Tel: +64 - 3 376 5205  
Email: info.nz@leviat.com

### Norway

#### Leviat

Vestre Svanholmen 5  
4313 Sandnes  
Tel: +47 - 51 82 34 00  
Email: info.no@leviat.com

### Poland

#### Leviat

Ul. Obornicka 287  
60-691 Poznan  
Tel: +48 - 61 - 622 14 14  
Email: info.pl@leviat.com

### Singapore

#### Leviat

14 Benoi Crescent  
Singapore 629977  
Tel: +65 - 6266 6802  
Email: info.sg@leviat.com

### Spain

#### Leviat

Polígono Industrial Santa Ana  
c/ Ignacio Zuloaga, 20  
28522 Rivas-Vaciamadrid  
Tel: +34 - 91 632 18 40  
Email: info.es@leviat.com

### Sweden

#### Leviat

Vädursgatan 5  
412 50 Göteborg  
Tel: +46 - 31 - 98 58 00  
Email: info.se@leviat.com

### Switzerland

#### Leviat

Hertistrasse 25  
8304 Wallisellen  
Tel: +41 - 44 - 849 78 78  
Email: info.ch@leviat.com

### United Kingdom

#### Leviat

A1/A2 Portland Close  
Houghton Regis LU5 5AW  
Tel: +44 - 1582 - 470 300  
E-Mail: info.uk@leviat.com

### United States of America

#### Leviat

6467 S Falkenburg Rd.  
Riverview, FL 33578  
Tel: (800) 423-9140  
Email: info.us@leviat.us

### For countries not listed

Email: info@leviat.com

## Leviat.com

For information on certified management systems and standards see [www.ancon.co.uk](http://www.ancon.co.uk) | [www.aschwanden.com](http://www.aschwanden.com) | [www.halfen.com](http://www.halfen.com)

### Notes regarding this catalogue

© Protected by copyright. The construction applications and details provided in this publication are indicative only. In every case, project working details should be entrusted to appropriately qualified and experienced persons. Whilst every care has been exercised in the preparation of this publication to ensure that any advice, recommendations or information is accurate, no liability or responsibility of any kind is accepted by Leviat for inaccuracies or printing errors. Technical and design changes are reserved. With a policy of continuous product development, Leviat reserves the right to modify product design and specification at any time.



**Imagine. Model. Make.**

**Leviat.com**